

PROPOSED DEVELOPMENT

17-21 Kimberly Street, Merrylands, NSW

greenview Job No: 211060

GENERAL INSTRUCTIONS

- THIS SOIL AND WATER MANAGEMENT PLAN IS TO BE READ IN CONJUNCTION WITH OTHER ENGINEERING PLANS RELATING TO THIS DEVELOPMENT.
- CONTRACTORS WILL ENSURE THAT ALL SOIL AND WATER MANAGEMENT WORKS ARE UNDERTAKEN AS INSTRUCTED IN THIS SPECIFICATION AND CONSTRUCTED FOLLOWING THE GUIDELINES OF "MANAGING URBAN STORMWATER SOILS AND CONSTRUCTION", DEPT OF HOUSING, 1998 (BLUE BOOK).
- ALL SUBCONTRACTORS WILL BE INFORMED OF THEIR RESPONSIBILITIES IN REDUCING THE POTENTIAL FOR SOIL EROSION AND POLLUTION TO DOWNSLOPE AREAS.
- THESE PLANS SHALL BE READ IN CONJUNCTION WITH OTHER RELEVANT CONSULTANTS' PLANS, SPECIFICATIONS, CONDITIONS OF DEVELOPMENT CONSENT AND CONSTRUCTION CERTIFICATE REQUIREMENTS, WHERE DISCREPANCIES ARE FOUND NOTIFY ENGINEER IMMEDIATELY FOR VERIFICATION.
- WHERE THESE PLANS ARE NOTED FOR DEVELOPMENT APPLICATION PURPOSES ONLY, THEY SHALL NOT BE USED FOR OBTAINING A CONSTRUCTION CERTIFICATE NOR USED FOR CONSTRUCTION PURPOSES.

LAND DISTURBANCE INSTRUCTIONS

- DISTURBANCE TO BE NO FURTHER THAN 5 (PREFERABLY 2) METRES FROM THE EDGE OF ANY ESSENTIAL ENGINEERING ACTIVITY AS SHOWN ON APPROVED PLANS. ALL SITE WORKERS WILL CLEARLY RECOGNISE THESE ZONES THAT, WHERE APPROPRIATE, ARE IDENTIFIED WITH BARRIER FENCING (UPSLOPE) AND SEDIMENT FENCING (DOWNSLOPE) OR SIMILAR MATERIALS.
- ACCESS AREAS ARE TO BE LIMITED TO A MAXIMUM WIDTH OF 10 METRES THE SITE MANAGER WILL DETERMINE AND MARK THE LOCATION OF THESE ZONES ON-SITE. ALL SITE WORKERS WILL CLEARLY RECOGNISE THESE BOUNDARIES THAT, WHERE APPROPRIATE, ARE IDENTIFIED WITH BARRIER FENCING (UPSLOPE) AND SEDIMENT FENCING (DOWNSLOPE) OR SIMILAR MATERIALS.
- ENTRY TO LANDS NOT REQUIRED FOR CONSTRUCTION OR ACCESS IS PROHIBITED EXCEPT FOR ESSENTIAL THINNING OF PLANT GROWTH.
- WORKS ARE TO PROCEED IN THE FOLLOWING SEQUENCE:
 - INSTALL ALL BARRIER AND SEDIMENT FENCING WHERE SHOWN ON THE PLAN.
 - CONSTRUCT THE STABILISED SITE ACCESS.
 - CONSTRUCT DIVERSION DRAINS AS REQUIRED.
 - INSTALL MESH AND GRAVEL INLETS FOR ANY ADJACENT KERB INLETS.
 - INSTALL GEOTEXTILE INLET FILTERS AROUND ANY ON-SITE DROP INLET PITS.
 - CLEAR SITE AND STRIP AND STOCKPILE TOPSOIL IN LOCATIONS SHOWN ON THE PLAN.
 - UNDERTAKE ALL ESSENTIAL CONSTRUCTION WORKS ENSURING THAT ROOF AND/OR PAVED AREA STORMWATER SYSTEMS ARE CONNECTED TO PERMANENT DRAINAGE AS SOON AS PRACTICABLE.
 - GRADE LOT AREAS TO FINAL GRADES AND APPLY PERMANENT STABILISATION (LANDSCAPING) WITHIN 20 DAYS OF COMPLETION OF CONSTRUCTION WORKS.
 - REMOVE TEMPORARY EROSION CONTROL MEASURES AFTER THE PERMANENT LANDSCAPING HAS BEEN COMPLETED.
- ENSURE THAT SLOPE LENGTHS DO NOT EXCEED 80 METRES WHERE PRACTICABLE. SLOPE LENGTHS ARE DETERMINED BY SILTATION FENCING AND CATCH DRAIN SPACING.
- ON COMPLETION OF MAJOR WORKS LEAVE DISTURBED LANDS WITH A SCARIFIED SURFACE TO ENCOURAGE WATER INFILTRATION AND ASSIST WITH KEYING TOPSOIL LATER.

SITE MAINTENANCE INSTRUCTIONS

- THE SITE SUPERINTENDENT WILL INSPECT THE SITE AT LEAST WEEKLY AND AT THE CONCLUSION OF EVERY STORM EVENT TO:
 - ENSURE THAT DRAINS OPERATE PROPERLY AND TO EFFECT ANY NECESSARY REPAIRS.
 - REMOVE SPILLED SAND OR OTHER MATERIALS FROM HAZARD AREAS, INCLUDING LANDS CLOSER THAN 5 METRES FROM AREAS OF LIKELY CONCENTRATED OR HIGH VELOCITY FLOWS ESPECIALLY WATERWAYS AND PAVED AREAS.
 - REMOVE TRAPPED SEDIMENT WHENEVER THE DESIGN CAPACITY OF THAT STRUCTURE HAS BEEN EXCEEDED.
 - ENSURE REHABILITATED LANDS HAVE EFFECTIVELY REDUCED THE EROSION HAZARD AND NOT TO INITIATE UPGRADING OR REPAIR AS NECESSARY.
 - CONSTRUCT ADDITIONAL EROSION AND/OR SEDIMENT CONTROL WORKS AS MIGHT BECOME NECESSARY TO ENSURE THE DESIRED PROTECTION IS GIVEN TO DOWNSLOPE LANDS AND WATERWAYS. MAKE ONGOING CHANGES TO THE PLAN WHERE IT PROVES INADEQUATE IN PRACTICE OR IS SUBJECTED TO CHANGES IN CONDITIONS ON THE WORK-SITE OR ELSEWHERE IN THE CATCHMENT.
 - MAINTAIN EROSION AND SEDIMENT CONTROL STRUCTURES IN A FULLY FUNCTIONING CONDITION UNTIL ALL EARTHWORK ACTIVITIES ARE COMPLETED AND THE SITE IS REHABILITATED.

THE SITE SUPERINTENDENT WILL KEEP A LOGBOOK MAKING ENTRIES AT LEAST WEEKLY, IMMEDIATELY BEFORE FORECAST RAIN AND AFTER RAINFALL ENTRIES WILL INCLUDE:

- THE VOLUME AND INTENSITY OF ANY RAINFALL EVENTS.
- THE CONDITION OF ANY SOIL AND WATER MANAGEMENT WORKS.
- THE CONDITION OF VEGETATION AND ANY NEED TO IRRIGATE.
- THE NEED FOR DUST PREVENTION STRATEGIES.
- ANY REMEDIAL WORKS TO BE UNDERTAKEN.

THE LOGBOOK WILL BE KEPT ON-SITE AND MADE AVAILABLE TO ANY AUTHORISED PERSON UPON REQUEST. IT WILL BE GIVEN TO THE PROJECT MANAGER AT THE CONCLUSION OF THE WORKS.

SAFETY IN DESIGN NOTES

- THERE ARE INHERENT RISKS WITH CONSTRUCTING, MAINTAINING, OPERATING, DEMOLISHING, DISMANTLING AND DISPOSING. WE NOTE THIS DESIGN IS TYPICAL OF SIMILAR DESIGNS. AS FAR AS IS REASONABLY PRACTICABLE RISKS HAVE BEEN ELIMINATED OR MINIMISED THROUGH THE DESIGN PROCESS. HAZARD CONTROLS MUST STILL BE IMPLEMENTED BY THE CONTRACTOR, OWNER OR OPERATOR TO ENSURE THE SAFETY OF WORKERS. GREENVIEW ASSESSMENT DID NOT IDENTIFY ANY UNIQUE RISKS ASSOCIATED WITH THE DESIGN.

SEDIMENT CONTROL INSTRUCTIONS

- SEDIMENT FENCES WILL BE INSTALLED AS SHOWN ON THE PLAN AND ELSEWHERE AT THE DISCRETION OF THE SITE SUPERINTENDENT TO CONTAIN SOIL AS NEAR AS POSSIBLE TO THEIR SOURCE.
- SEDIMENT FENCES WILL NOT HAVE CATCHMENT AREAS EXCEEDING 900 SQUARE METRES AND HAVE A STORAGE DEPTH OF AT LEAST 0.6 METRES.
- SEDIMENT REMOVED FROM ANY TRAPPING DEVICES WILL BE RELOCATED WHERE FURTHER POLLUTION TO DOWNSLOPE LANDS AND WATERWAYS CANNOT OCCUR.
- STOCKPILES ARE NOT TO BE LOCATED WITHIN 5 METRES OF HAZARD AREAS INCLUDING AREAS OF HIGH VELOCITY FLOWS SUCH AS WATERWAYS, PAVED AREAS AND DRIVEWAYS.
- WATER WILL BE PREVENTED FROM DIRECTLY ENTERING THE PERMANENT DRAINAGE SYSTEM UNLESS THE CATCHMENT AREA HAS BEEN PERMANENTLY LANDSCAPED AND/OR WATER HAS BEEN TREATED BY AN APPROVED DEVICE.
- TEMPORARY SEDIMENT TRAPS WILL REMAIN IN PLACE UNTIL AFTER THE LANDS THEY ARE PROTECTING ARE COMPLETELY REHABILITATED.
- ACCESS TO SITES SHOULD BE STABILISED TO REDUCE THE LIKELIHOOD OF VEHICLES TRACKING SOIL MATERIALS ONTO PUBLIC ROADS AND ENSURE ALL-WEATHER ENTRY/EXIT.

SOIL EROSION CONTROL INSTRUCTIONS

- EARTH BATTERS WILL BE CONSTRUCTED WITH AS LOW A GRADIENT AS PRACTICABLE BUT NO STEEPER, UNLESS OTHERWISE NOTED, THAN:
 - 2(H):1(V) WHERE SLOPE LENGTH LESS THAN 12 METRES.
 - 2.5(H):1(V) WHERE SLOPE LENGTH BETWEEN 12 AND 16 METRES.
 - 3(H):1(V) WHERE SLOPE LENGTH BETWEEN 12 AND 20 METRES.
 - 4(H):1(V) WHERE SLOPE LENGTH GREATER THAN 20 METRES.
- ALL WATERWAYS, DRAINS, SPILLWAYS AND THEIR OUTLETS WILL BE CONSTRUCTED TO BE STABLE IN AT LEAST THE 120 YEAR ARI, TIME OF CONCENTRATION STORM EVENT.
- WATERWAYS AND OTHER AREAS SUBJECT TO CONCENTRATED FLOWS AFTER CONSTRUCTION ARE TO HAVE A MAXIMUM GROUND COVER C-FACTOR OF 0.05 (70% GROUND COVER) WITHIN 10 WORKING DAYS FROM COMPLETION OF FORMATION. FLOW VELOCITIES ARE TO BE LIMITED TO THOSE SHOWN IN TABLE 5-1 OF "MANAGING URBAN STORMWATER-SOILS AND CONSTRUCTION", DEPT OF HOUSING 1998 (BLUE BOOK). FOOT AND VEHICULAR TRAFFIC WILL BE PROHIBITED IN THESE AREAS.
- STOCKPILES AFTER CONSTRUCTION ARE TO HAVE A MAXIMUM GROUND COVER C-FACTOR OF 0.1 (60% GROUND COVER) WITHIN 10 WORKING DAYS FROM COMPLETION OF FORMATION.
- ALL LANDS, INCLUDING WATERWAYS AND STOCKPILES, DURING CONSTRUCTION ARE TO HAVE A MAXIMUM GROUND COVER C-FACTOR OF 0.15 (50% GROUND COVER) WITHIN 20 WORKING DAYS FROM INACTIVITY EVEN THOUGH WORKS MAY CONTINUE LATER.
- FOR AREAS OF SHEET FLOW USE THE FOLLOWING GROUND COVER PLANT SPECIES FOR TEMPORARY COVER: JAPANESE MILLET 20 KG/HA AND OATS 20 KG/HA.
- PERMANENT REHABILITATION OF LANDS AFTER CONSTRUCTION WILL ACHIEVE A GROUND COVER C-FACTOR OF LESS THAN 0.1 AND LESS THAN 0.05 WITHIN 60 DAYS. NEWLY PLANTED LANDS WILL BE WATERED REGULARLY UNTIL AN EFFECTIVE COVER IS ESTABLISHED AND PLANTS ARE GROWING VIGOROUSLY. FOLLOW-UP SEED AND FERTILISER WILL BE APPLIED AS NECESSARY.
- REVEGETATION SHOULD BE AIMED AT RE-ESTABLISHING NATURAL SPECIES. NATURAL SURFACE SOILS SHOULD BE REPLACED AND NON-PERSISTENT ANNUAL COVER CROPS SHOULD BE USED.

WASTE CONTROL INSTRUCTIONS

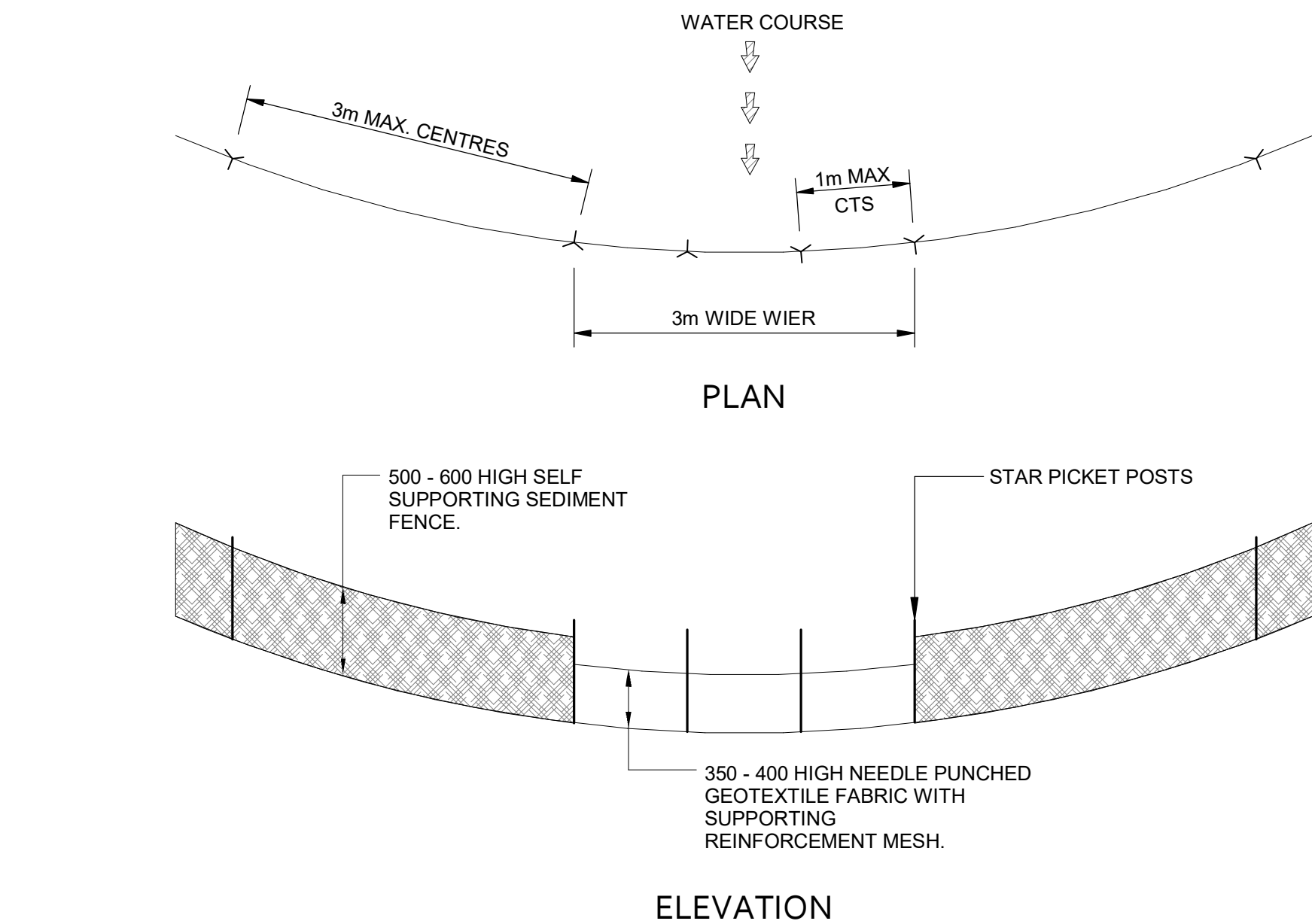
- ACCEPTABLE BINS WILL BE PROVIDED FOR ANY CONCRETE AND MORTAR SLURRIES, PAINTS, ACID WASHING, LIGHTWEIGHT WASTE MATERIALS AND LITTER. CLEARANCE SERVICES WILL BE PROVIDED AT LEAST WEEKLY. DISPOSAL OF WASTE WILL BE IN A MANNER APPROVED BY THE SITE SUPERINTENDENT.
- ALL POSSIBLE POLLUTANT MATERIALS ARE TO BE STORED WELL CLEAR OF ANY POORLY DRAINED AREAS, FLOOD PHONE AREAS, STREAMBANKS, CHANNELS AND STORMWATER DRAINAGE AREAS. STORE SUCH MATERIALS IN A DESIGNATED AREA UNDER COVER WHERE POSSIBLE AND WITHIN CONTAINMENT BUNDS.
- ALL SITE STAFF AND SUB-CONTRACTORS ARE TO BE INFORMED OF THEIR OBLIGATION TO USE WASTE CONTROL FACILITIES PROVIDED.
- ANY DE-WATERING ACTIVITIES ARE TO BE CLOSELY MONITORED TO ENSURE THAT WATER IS NOT POLLUTED BY SEDIMENT, TOXIC MATERIALS OR PETROLEUM PRODUCTS.
- PROVIDE DESIGNATED VEHICULAR WASHDOWN AND MAINTENANCE AREAS WHICH ARE TO HAVE CONTAINMENT BUNDS.

PROCEDURE FOR DE-WATERING

- ENSURE PERMISSION FOR DE-WATERING IS RECEIVED FROM AUTHORITIES BEFORE PUMPING OUT.
- AN ON-SITE TREATMENT PROCESS DISCHARGING TO THE STORMWATER SYSTEM WILL BE IMPLEMENTED. ALL SITE WATERS DURING CONSTRUCTION WILL BE CONTAINED ON SITE AND RELEASED ONLY WHEN pH IS BETWEEN 8.5 & 6.5, SUSPENDED SOLIDS ARE LESS THAN 50mg/L, TURBIDITY LESS THAN 100 NTUS, OIL AND GREASE LESS THAN 10mg/L AND BIOLOGICAL OXYGEN DEMAND (BOD5) LESS THAN 30mg/L (FOR STORMS LESS THAN 1 IN 5 YEAR EVENTS).
- METHODS OF SAMPLING AND ANALYSIS OF WATER QUALITY WILL BE IN ACCORDANCE WITH THE APPLICABLE METHOD LISTED IN THE EPA PUBLISHED APPROVED METHODS FOR THE SAMPLING ANALYSIS OF WATER POLLUTANTS IN NEW SOUTH WALES.
- WHERE LABORATORY ANALYSIS IS REQUIRED AS INDICATED BY IN-SITU TESTING, APPROPRIATE SAMPLE BOTTLES AND PRESERVATIVES WILL BE USED AND GUIDANCE FOR THE SAMPLING METHOD OBTAINED FROM APPLICABLE PARTS OF ASS667.1 AND ASS667.6. ANALYSIS WILL BE UNDERTAKEN WHERE PRACTICAL BY A NATA REGISTERED LABORATORY CERTIFIED TO PERFORM THE APPLICABLE ANALYSIS.
- AS EXCAVATION TO TOP SOIL PROGRESSES, ANY WATER COLLECTED AT THE BOTTOM OF EXCAVATIONS WILL BE DIVERTED TO A TEMPORARY SEDIMENTATION BASIN OR SETTLEMENT TANK. IF THE WATER CONTAINS ONLY SEDIMENTS, IT WILL BE FILTERED AND PUMPED TO STORMWATER. BEFORE THIS CAN HAPPEN IT MUST CONTAIN LESS THAN 50mg/L TOTAL SUSPENDED SOLIDS.
- POLLUTED WATER MUST NOT ENTER THE STORMWATER SYSTEM. IN SOME CIRCUMSTANCES, A LIQUID WASTE COMPANY MAY BE REQUIRED TO COLLECT CONTAMINATED WATER FOR DISPOSAL AT A LICENSED TREATMENT FACILITY.

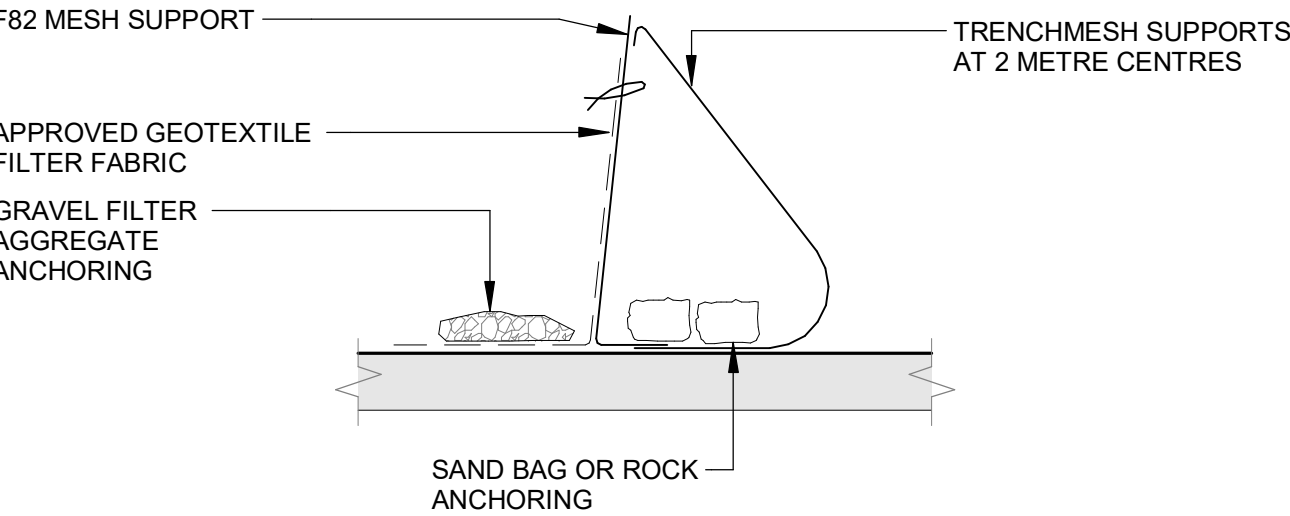
THE BUILDER AND EXCAVATION CONTRACTOR ARE TO ENSURE ANY WATER DISCHARGED INTO COUNCIL STORMWATER SYSTEM FROM THE EXCAVATED PORTIONS OF THE SITE COMPLY WITH THE RELEVANT ENVIRONMENTAL CRITERIA AND APPROPRIATE CONTROL METHODS SHALL BE ADOPTED. THE PROPOSED CONTROL METHODS ARE STRICTLY TO COMPLY WITH THE ANZECC 2000 GUIDELINES.

WHERE WORK INVOLVES EXCAVATION OR STOCKPILING OF RAW OR LOOSE MATERIALS, EROSION AND SEDIMENT CONTROL DEVICES SHALL BE PROVIDED WHOLLY WITHIN THE SITE WHILST WORK IS BEING CARRIED OUT IN ORDER TO PREVENT SEDIMENT AND SILT FROM SITE WORKS BEING CONVEYED BY STORMWATER INTO COUNCIL'S STORMWATER SYSTEM. NATURAL WATER COURSES, BUSHLANDS, AND NEIGHBORING PROPERTIES. IN THIS REGARD, ALL STORMWATER DISCHARGE FROM THE SITE SHALL MEET THE REQUIREMENTS OF THE PROTECT OF ENVIRONMENT OPERATIONS ACT 1997 AND THE DEPARTMENT OF ENVIRONMENT, CLIMATE CHANGE AND WATER GUIDELINES. THE CONTROL DEVICES ARE TO BE MAINTAINED IN A SERVICEABLE CONDITION AT ALL TIMES.



ESM SEDIMENT FENCE WEIR

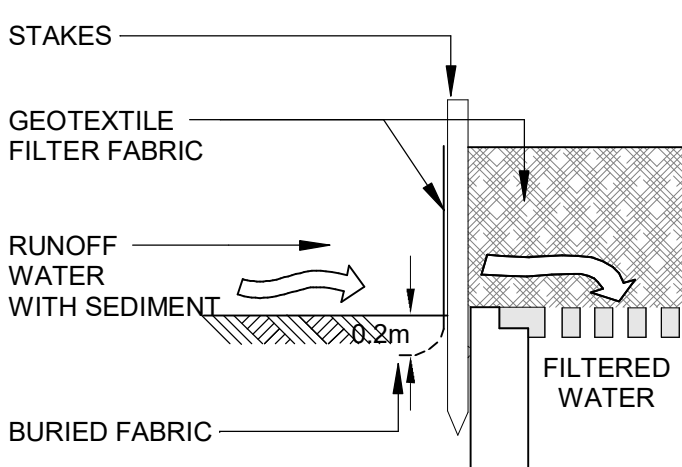
Scale: 1 : 20



- CONSTRUCT SEDIMENT FENCE AS CLOSE AS POSSIBLE TO PARALLEL TO THE CONTOURS OF THE SITE.
- FIX SELF-SUPPORTING GEOTEXTILE TO UPSLOPE SIDE OF POSTS WITH WIRE TIES OR AS RECOMMENDED BY GEOTEXTILE MANUFACTURER.
- JOIN SECTIONS OF FABRIC AT A SUPPORT WITH A 150mm OVERLAP.
- REFER TO DETAIL SD 6-9 "BLUE BOOK"

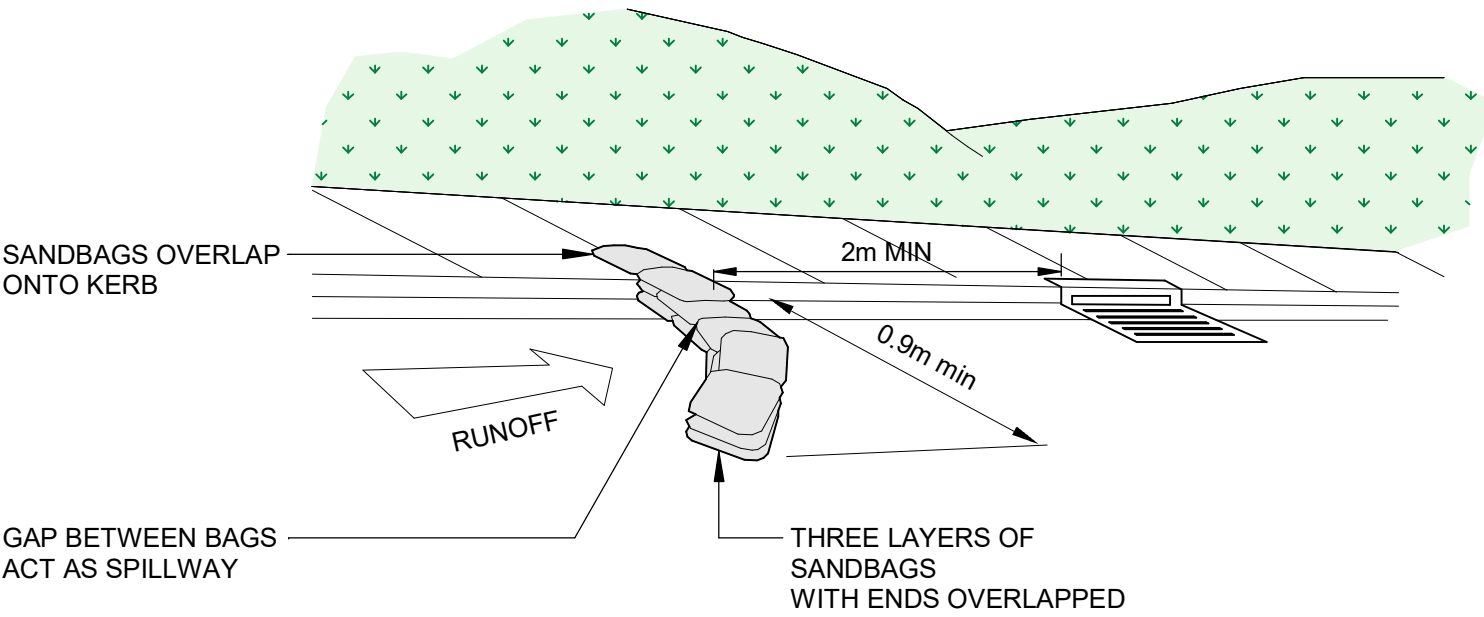
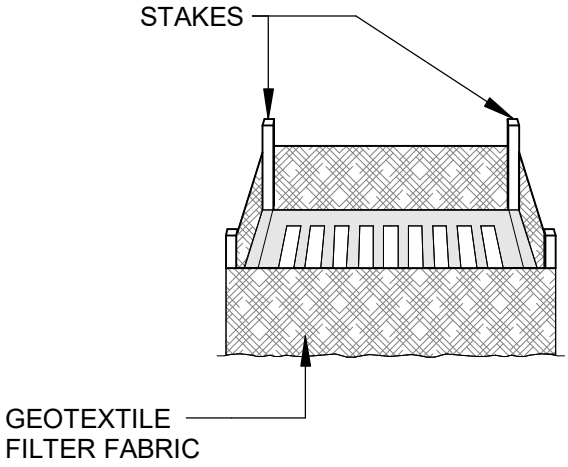
SILT FENCE BARRIER DETAIL

Scale: 1 : 20



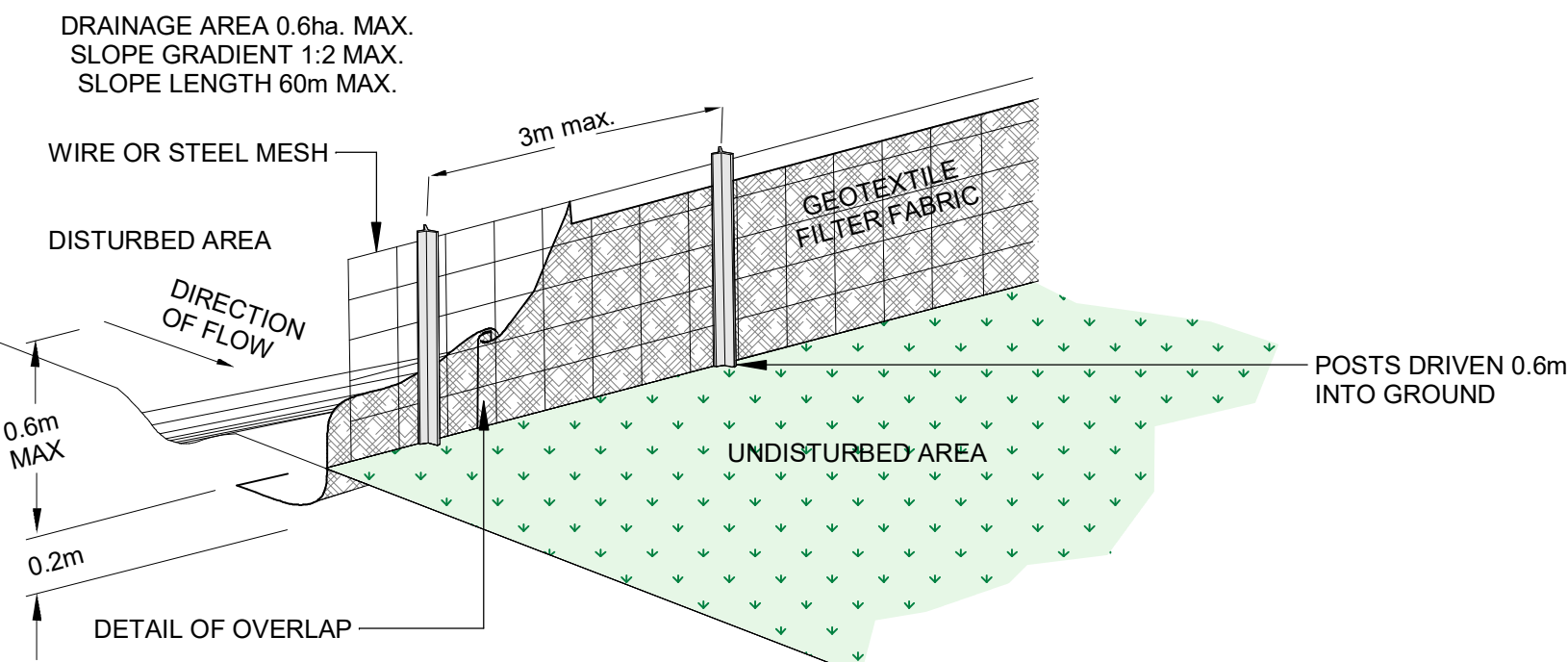
INLET SEDIMENT TRAP

Scale: 1 : 20



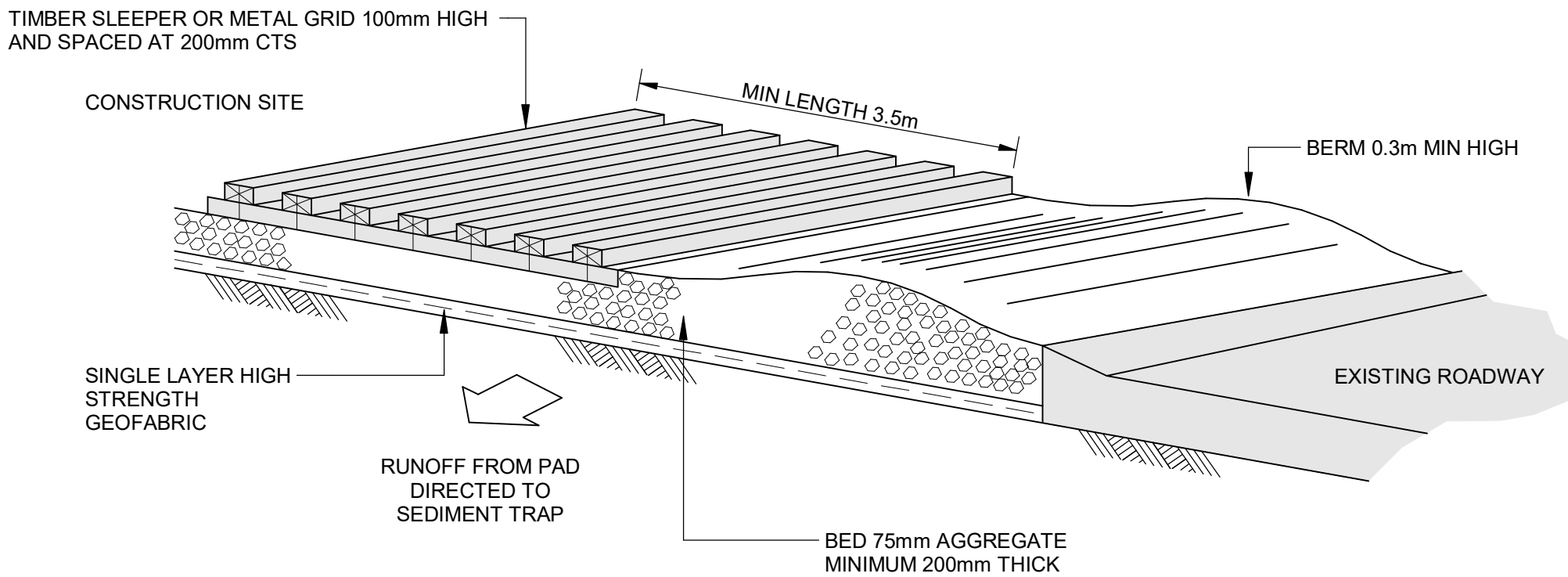
SANDBAG SEDIMENT TRAP

Scale: 1 : 20



SEDIMENT SILT FENCE

Scale: 1 : 20



TEMPORARY CONSTRUCTION EXIT

Scale: 1 : 20



LOCKED BAG 4001
ASHFIELD NSW BC1800
PHONE NO (02) 8753 8000
FAX NO (02) 8753 8888

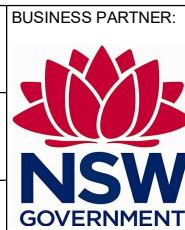
www.facs.nsw.gov.au



REV.	DATE	BY	DESCRIPTION
3	14.03.23	JPS	ISSUED FOR APPROVAL
2	03.02.23	RG	PRELIMINARY ISSUE
1	20.09.22	KJL	PRELIMINARY ISSUE

ARCHITECT	BREWSTER MURRAY PTY LTD
PROJECT MANAGER	LAND & HOUSING CORPORATION
ELECTRICAL CONSULTANT	GREENVIEW CONSULTING PTY LTD

STRUCTURAL CONSULTANT	GREENVIEW CONSULTING PTY LTD
HYDRAULIC CONSULTANT	GREENVIEW CONSULTING PTY LTD
LANDSCAPE CONSULTANT	GREENLAND DESIGN



PROJECT:	PROPOSED DEVELOPMENT
AT	17-21 Kimberly Street, Merrylands, NSW

TITLE:	NOTES & LEGENDS
--------	-----------------

STATUS:	PRELIMINARY
DATE:	14.03.23
SCALE:	As indicated
PRJ:	211060
JOB:	211060
STAGE:	P
DRAWN:	KJL
DESIGN:	KJL
CHECKED:	KJL
TYPE:	C
SHEET:	ESM1
REV:	3

ENVIRONMENTAL SITE MANAGEMENT LAYOUT

Scale: 1 : 150

FOR NOISE CONTROL, VIBRATION MANAGEMENT, DUST CONTROL, ODOUR CONTROL REFER TO NOTES ON THIS DRAWING, FOR OTHER NOTES (LITTER/WASTE, STORMWATER) REFER ESM1

WHERE WORK INVOLVES EXCAVATION OR STOCKPILING OF RAW OR LOOSE MATERIALS, EROSION AND SEDIMENT CONTROL DEVICES SHALL BE PROVIDED WHOLLY WITHIN THE SITE WHILST WORK IS BEING CARRIED OUT IN ORDER TO PREVENT SEDIMENT AND SILT FROM SITE WORKS BEING CONVEYED BY STORMWATER INTO COUNCIL'S STORMWATER SYSTEM, NATURAL WATER COURSES, BUSHLANDS, AND NEIGHBORING PROPERTIES. IN THIS REGARD, ALL STORMWATER DISCHARGE FROM THE SITE SHALL MEET THE REQUIREMENTS OF THE PROTECT OF ENVIRONMENT OPERATIONS ACT 1997 AND THE DEPARTMENT OF ENVIRONMENT, CLIMATE CHANGE AND WATER GUIDELINES. THE CONTROL DEVICES ARE TO BE MAINTAINED IN A SERVICEABLE CONDITION AT ALL TIMES.

THE BUILDER AND EXCAVATION CONTRACTOR ARE TO ENSURE ANY WATER DISCHARGED INTO COUNCIL STORMWATER SYSTEM FROM THE EXCAVATED PORTIONS OF THE SITE COMPLY WITH THE RELEVANT ENVIRONMENTAL CRITERIA AND APPROPRIATE CONTROL METHODS SHALL BE ADOPTED. THE PROPOSED CONTROL METHODS ARE STRICTLY TO COMPLY WITH THE ANZECC 2000 GUIDELINES.

SITE MANAGEMENT LEGEND

- CHAIN WIRE FENCE
- SILT FENCE

ESM - SITE MANAGEMENT SCHEDULE

TYPE	DESCRIPTION
1	SKIP BIN (PROVIDE COVER)
2	SITE ACCESS GRATE
3	MATERIALS STOCKPILE (RELOCATE AS NECESSARY)
4	TOILET FACILITY
5	SITE SHED

NOISE CONTROL

- WHERE POSSIBLE, STRATEGICALLY PLACE NOISE-GENERATING PLANT / EQUIPMENT TO TAKE ADVANTAGE OF NATURAL SCREENING (E.G. BUILDINGS)
- AVOID PLACING NOISE-GENERATING PLANT / EQUIPMENT CLOSE TOGETHER AND/OR OPERATE SIMULTANEOUSLY
- MAINTAIN ALL PLANT & EQUIPMENT TO MINIMISE NOISE EMISSIONS (E.G. REPAIR BROKEN SILENCING EQUIPMENT, TIGHTEN RATTLING COMPONENTS ETC)
- ALL PLANT & EQUIPMENT TO BE OPERATED IN THE CORRECT MANNER TO AVOID UNNECESSARY NOISE EMISSIONS
- ALL DELIVERIES TO SITE TO BE IN ACCORD WITH THE RELEVANT CONSTRUCTION TRAFFIC MANAGEMENT PLAN (CTMP)
- NO PUBLIC ADDRESS SYSTEMS TO BE USED EXCEPT IN THE CASE OF EMERGENCIES
- WHERE NECESSARY, FIT PLANT WITH SILENCERS AND/OR OTHER NOISE ATTENUATION MEASURES
- ENSURE CONSTRUCTION VEHICLES AND PLANT/EQUIPMENT ARE TURNED OFF WHEN NOT IN USE (I.E. AVOID IDLING)

VIBRATION MANAGEMENT

- USE LOW-VIBRATION EMITTING PLANT & EQUIPMENT WHERE POSSIBLE
- WHERE PRACTICAL, USE NON-PERCUSSIVE PILING TECHNIQUES OR PROVIDE ACCOUSTIC SHIELDING

DUST CONTROL

- WHERE POSSIBLE, STAGE ANY VEGETATION REMOVAL TO MINIMISE EXPOSED AREAS
- AREAS EXPOSED (IN THE SHORT TERM) TO BE STABILISED USING WATERING AND/OR GEO-FABRICS AS APPROPRIATE TO MINIMISE DUST GENERATION
- MODIFY / REDUCE CONSTRUCTION ACTIVITIES DURING HIGH WIND CONDITIONS IF INCREASED DUST GENERATION IS A POSSIBILITY
- DUST CONTROL MEASURES TO BE IMPLEMENTED AS THE SITE SUPERVISOR DEEMS APPROPRIATE, INCLUDING WATER CARTS, SPRINKLERS, SPRAYS, DUST SCREENS, ETC
- CHECK EROSION CONTROL MEASURE REGULARLY TO ENSURE CAPTURED SILT DOES NOT BECOME AIRBORNE

ODOUR CONTROL

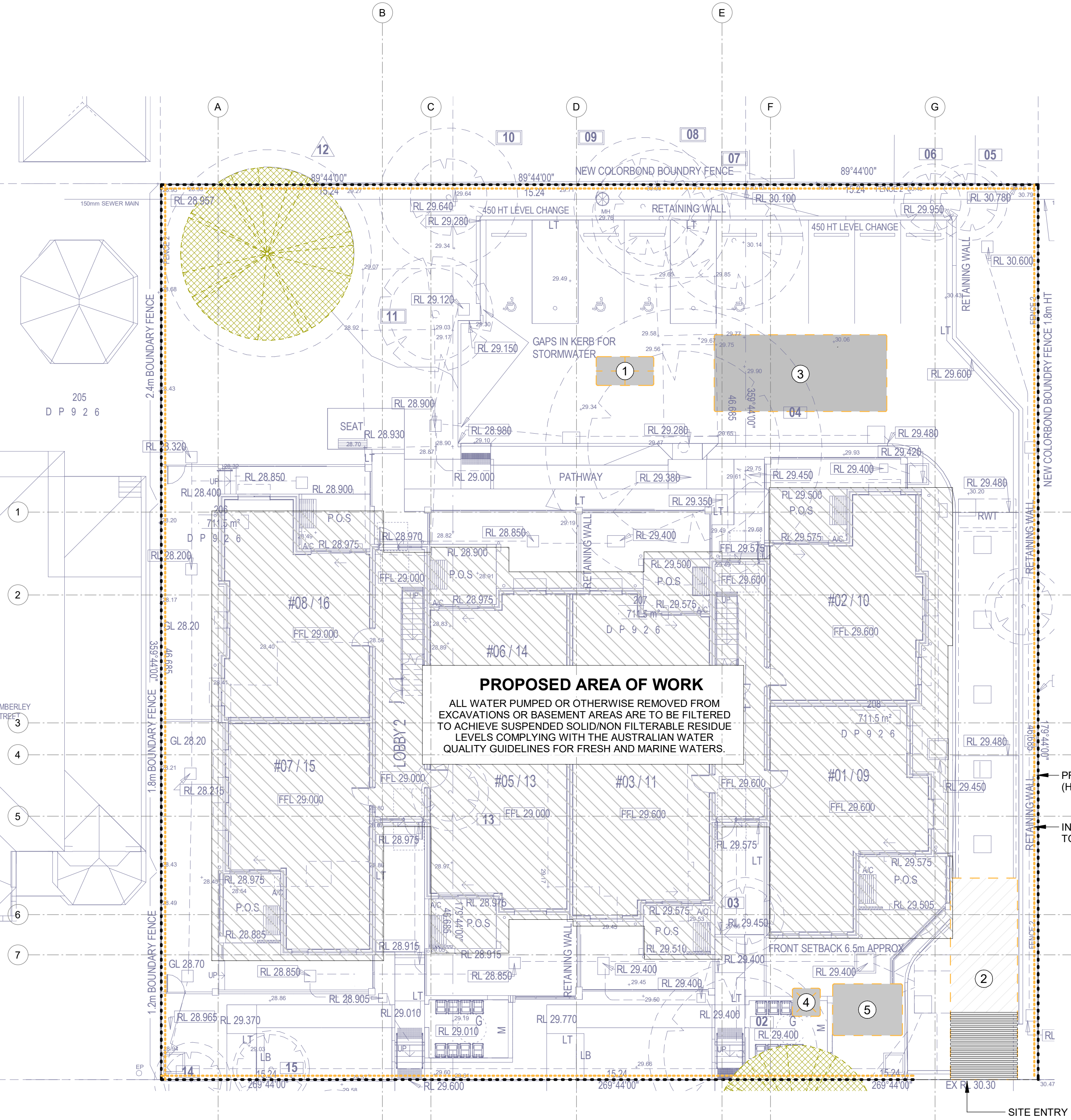
- SEGRATE AND COLLECT WASTE REGULARLY TO ENSURE ODOURS ARE MINIMISED
- NO BURNING-OFF OF WASTE AT ANY TIME
- REMOVE WASTE BINS FROM SITE REGULARLY

PROVIDE TEMPORARY CHAIN WIRE FENCING (HOARDING) AROUND THE SITE BOUNDARY.

INSTALL TEMPORARY SILT FENCE PRIOR TO DEMOLITION AND EARTHWORKS

PROPOSED AREA OF WORK

ALL WATER PUMPED OR OTHERWISE REMOVED FROM EXCAVATIONS OR BASEMENT AREAS ARE TO BE FILTERED TO ACHIEVE SUSPENDED SOLID/NON FILTERABLE RESIDUE LEVELS COMPLYING WITH THE AUSTRALIAN WATER QUALITY GUIDELINES FOR FRESH AND MARINE WATERS.



LOCKED BAG 4001
ASHFIELD NSW BC1800
PHONE No (02) 8753 8000
FAX No (02) 8753 8888

www.facs.nsw.gov.au



REV.	DATE	BY	DESCRIPTION
4	05.04.23	JPS	ISSUED FOR APPROVAL
3	14.03.23	JPS	ISSUED FOR APPROVAL
2	03.02.23	RG	PRELIMINARY ISSUE
1	20.09.22	KJL	PRELIMINARY ISSUE

The copyright of this document & design remains with Greenview Consulting Pty Ltd and shall not be reproduced without prior consent.

ARCHITECT	BREWSTER MURRAY PTY LTD
PROJECT MANAGER	LAND & HOUSING CORPORATION
ELECTRICAL CONSULTANT	GREENVIEW CONSULTING PTY LTD

STRUCTURAL CONSULTANT	GREENVIEW CONSULTING PTY LTD
HYDRAULIC CONSULTANT	GREENVIEW CONSULTING PTY LTD
LANDSCAPE CONSULTANT	GREENLAND DESIGN



PROJECT:	PROPOSED DEVELOPMENT
AT	17-21 Kimberly Street, Merrylands, NSW

TITLE:	ENVIRONMENTAL SITE MANAGEMENT PLAN
--------	------------------------------------

STATUS:	PRELIMINARY
DATE:	05.04.23 As indicated
SCALE:	
PRJ:	211060
JOB:	211060
STAGE:	P
DRAWN:	KJL
DESIGN:	KJL
CHECKED:	KJL
TYPE:	C
SHEET:	ESM2
REV:	4